

Electrosurgery cables

- fully autoclavable
- cables for all generators and instruments

Supplied on all cables :-

AUTOC**l**abels

Pop a hole in the AUTOC**l**abel every time the product is autoclaved with the permanently attached AUTOC**l**abel punch.



Universal monopolar cables

One cable fits all and a choice of colours!
Now you need only one cable
No more connection problems!



Safety sleeve –see the breaks before they occur

- Double insulated cable
- Built-in cable restraints
- Highly flexible cable/connector.

Generator connectors

4mm



B

8mm



C

Fits most male forcep ends



4.8mm Monopolar handles (foot controlled)



4.0mm Endoscopic

Instrument connectors

Orange



B-50/O
4m cable

C-50/O
4m cable

Fuchsia



B-50/F
4m cable

C-50/F
4m cable

Purple



B-50/P
4m cable

C-50/P
4m cable

Blue



B-50/B
4m cable

C-50/B
4m cable



4.5 to 5.0mm Monopolar forceps



4.0mm Monopolar handle UK

AUTOClabels

Pop a hole in the **AUTOClabels** every time the product is autoclaved with the permanently attached **AUTOClabels** punch.

See page 28



PAGE 28

Monopolar cables

		Instrument connectors	Olympus resectoscope (4mm female instrument socket)	3mm endoscopic socket Olympus, Cook instruments	US screw fitting Olsen
					
			G	10	8
Generator connectors					
4mm male	Aesculap Berchtold Erbe T. Series Eschmann TD300, TD311, DS302 Sutter BM780		B-G 3m cable B-G/5 5m cable	B-10 3m cable B-10/5 5m cable	B-8 3m cable B-8/5 5m cable
8mm	Bard Birtcher Bovie Bowa Conmed Eschmann Medtrex and Valleylab		C-G 3m cable C-G/5 5m cable	C-10 3m cable C-10/5 5m cable	C-8 3m cable C-8/5 5m cable
5mm	ACC (standard) ICC Erbe V10* Karl Storz *Depends on generator socket		D-G 3m cable D-G/5 5m cable	D-10 3m cable D-10/5 5m cable	D-8 3m cable D-8/5 5m cable
4mm female	Aesculap Berchtold Erbe T Series Huttinger Martin Micromed Siemens and Sutter BM780		G-G 3m cable G-G/5 5m cable	G-10 3m cable G-10/5 5m cable	G-8 3m cable G-8/5 5m cable

4mm socket endoscopic instrument  7	Adult Storz resectoscope  6	Comeg 2mm pin fitting Wolf Storz pin fitting  4 (old 11)	Childs Storz resectoscope  3	UK 4.8mm socket shrouded safety connector  1
B-7 3m cable B-7/5 5m cable	B-6 3m cable B-6/5 5m cable	B-4 3m cable B-4/5 5m cable	B-3 3m cable B-3/5 5m cable	B-1 3m cable B-1/5 5m cable
C-7 3m cable C-7/5 5m cable	C-6 3m cable C-6/5 5m cable	C-4 3m cable C-4/5 5m cable	C-3 3m cable C-3/5 5m cable	C-1 3m cable C-1/5 5m cable
D-7 3m cable D-7/5 5m cable	D-6 3m cable D-6/5 5m cable	D-4 3m cable D-4/5 5m cable	D-3 3m cable D-3/5 5m cable	D-1 3m cable D-1/5 5m cable
G-7 3m cable G-7/5 5m cable	G-6 3m cable G-6/5 5m cable	G-4 3m cable G-4/5 5m cable	G-3 3m cable G-3/5 5m cable	G-1 3m cable G-1/5 5m cable

AUTOCLabels

Pop a hole in the **AUTOCLabels** every time the product is autoclaved with the permanently attached **AUTOCLabels** punch.

See page 28



These cables are for use with UK and Prima monopolar forceps

Pages 31-32



+44 (0) 1453 752626



+44 (0) 1453 756750



sales@prima-medical.com



www.prima-medical.com



Universal bipolar cables

Fits US and European bipolar instruments

This innovative universal bipolar cable fits both US and European fitting bipolar instruments

- Always have the correct cable
- Save money by having a single product
- Reduce stock level requirements



Generator connectors

Instrument connector

Universal



Conmed



L

L-30
4m cable

Dolley
EMC



M

M-30
4m cable

Erbe, Siemens
Sutter BM50



P

P-30
4m cable

Universal bipolar cables

AUTOClabels

Pop a hole in the **AUTOClabels** every time the product is autoclaved with the permanently attached **AUTOClabels** punch.

See page 28



<p>2mm Martin, Aesculap, Integra, Wolf, Berchtold, Sutter BM780</p>  <p>Q</p>	<p>Older Eschmann 300 series (Lemo)</p>  <p>R</p>	<p>Twin 4mm pin, Erbe Int. Eschmann, Alsa MCD series</p>  <p>S</p>	<p>Aesculap (Older models GK50)</p>  <p>T</p>	<p>Storz</p>  <p>U</p>	<p>Bowa, EMC, Erbe Int. Ethicon, Lamidey, Valleylab Coa comp, Olympus, Soering</p>  <p>V (old N)</p>	<p>Codman CMC11</p>  <p>W</p>	<p>Valleylab (autobipolar models only)</p>  <p>Y</p>
<p>Q-30 4m cable</p>	<p>R-30 4m cable</p>	<p>S-30 4m cable</p>	<p>T-30 4m cable</p>	<p>U-30 4m cable</p>	<p>V-30 4m cable</p>	<p>W-30 4m cable</p>	<p>Y-30 4m cable</p>

Specialist bipolar cables

AUTOClabels



Autoclave tracking system

Generator connectors

Conmed



L

Dolley
EMC



M

Erbe, Siemens
Sutter BM50



P

2mm Martin, Aesculap, Wolf
Berchtold, Sutter BM780



Q

Instrument connectors

European fitting



12

L-12
3m cable

L-12/5
5m cable

M-12
3m cable

M-12/5
5m cable

P-12
3m cable

P-12/5
5m cable

Q-12
3m cable

Q-12/5
5m cable

Karl Storz



14

L-14
3m cable

L-14/5
5m cable

M-14
3m cable

M-14/5
5m cable

P-14
3m cable

P-14/5
5m cable

Q-14
3m cable

Q-14/5
5m cable

R Wolf



15

L-15
3m cable

L-15/5
5m cable

M-15
3m cable

M-15/5
5m cable

P-15
3m cable

P-15/5
5m cable

Q-15
3m cable

Q-15/5
5m cable

USA twin pin (straight)



16

L-16
3m cable

L-16/5
5m cable

M-16
3m cable

M-16/5
5m cable

P-16
3m cable

P-16/5
5m cable

Q-16
3m cable

Q-16/5
5m cable

USA twin pin (angled)



16A

L-16A
3m cable

L-16A/5
5m cable

M-16A
3m cable

M-16A/5
5m cable

P-16A
3m cable

P-16A/5
5m cable

Q-16A
3m cable

Q-16A/5
5m cable

Older Eschmann 300 series (Lemo)  R	Twin 4mm pin, Erbe Int. Eschmann, Alsa MCD series  S	Aesculap (Older models GK50)  T	Storz  U	Bowa, EMC, Erbe Int. Ethicon, Lamidey, Valleylab Coa comp, Olympus, Soering  V (old N)	Codman CMC11  W	Valleylab (autobipolar models only)  Y	Conmed (handswitching bipolar forceps)  J
R-12 3m cable R-12/5 5m cable	S-12 3m cable S-12/5 5m cable	T-12 3m cable T-12/5 5m cable	U-12 3m cable U-12/5 5m cable	V-12 3m cable V-12/5 5m cable	W-12 3m cable W-12/5 5m cable	Y-12 3m cable	N/A
R-14 3m cable R-14/5 5m cable	S-14 3m cable S-14/5 5m cable	T-14 3m cable T-14/5 5m cable	U-14 3m cable U-14/5 5m cable	V-14 3m cable V-14/5 5m cable	W-14 3m cable W-14/5 5m cable	N/A	N/A
R-15 3m cable R-15/5 5m cable	S-15 3m cable S-15/5 5m cable	T-15 3m cable T-15/5 5m cable	U-15 3m cable U-15/5 5m cable	V-15 3m cable V-15/5 5m cable	W-15 3m cable W-15/5 5m cable	N/A	N/A
R-16 3m cable R-16/5 5m cable	S-16 3m cable S-16/5 5m cable	T-16 3m cable T-16/5 5m cable	U-16 3m cable U-16/5 5m cable	V-16 3m cable V-16/5 5m cable	W-16 3m cable W-16/5 5m cable	Y-16 3m cable	N/A
R-16A 3m cable R-16A/5 5m cable	S-16A 3m cable S-16A/5 5m cable	T-16A 3m cable T-16A/5 5m cable	U-16A 3m cable U-16A/5 5m cable	V-16A 3m cable V-16A/5 5m cable	W-16A 3m cable W-16A/5 5m cable	Y-16A 3m cable	N/A

Specialist bipolar cables

AUTOClabels



Autoclave tracking system

Generator connectors

Conmed



L

Dolley EMC



M

Erbe, Siemens Sutter BM50



P

Martin, Aesculap, Wolf Berchtold, Sutter BM780



Q

Instrument connectors

Aesculap (old style))



17

L-17
3m cable

L-17/5
5m cable

M-17
3m cable

M-17/5
5m cable

P-17
3m cable

P-17/5
5m cable

Q-17
3m cable

Q-17/5
5m cable

Conmed handswitching forceps



18

N/A

N/A

N/A

N/A

Storz/Spectrum (small Fischer plug)



20

L-20
3m cable

L-20/5
5m cable

M-20
3m cable

M-20/5
5m cable

P-20
3m cable

P-20/5
5m cable

Q-20
3m cable

Q-20/5
5m cable

Ethicon bipolar scissors



22

L-22
3m cable

L-22/5
5m cable

M-22
3m cable

M-22/5
5m cable

P-22
3m cable

P-22/5
5m cable

Q-22
3m cable

Q-22/5
5m cable

Universal (USA & European fittings)



30

L-30
4m cable

M-30
4m cable

P-30
4m cable

Q-30
4m cable

See page 22

Older Eschmann 300 series (Lemo)	Twin 4mm pin, Erbe Int., Eschmann, Alsa MCD series	Aesculap (Older models GK50)	Storz	Bowa, EMC, Erbe Int. Ethicon, Lamidey, Valleylab Coa comp, Olympus, Soering	Codman CMC11	Valleylab (autobipolar models only)	Conmed (handswitching bipolar forceps)
 R R-17 3m cable R-17/5 5m cable	 S S-17 3m cable S-17/5 5m cable	 T T-17 3m cable T-17/5 5m cable	 U U-17 3m cable U-17/5 5m cable	 V (old N) V-17 3m cable V-17/5 5m cable	 W W-17 3m cable W-17/5 5m cable	 Y N/A	 J N/A
N/A	N/A	N/A	N/A	N/A	N/A	N/A	J-18 3m cable J-18/5 5m cable
R-20 3m cable R-20/5 5m cable	S-20 3m cable S-20/5 5m cable	T-20 3m cable T-20/5 5m cable	U-20 3m cable U-20/5 5m cable	V-20 3m cable V-20/5 5m cable	W-20 3m cable W-20/5 5m cable	N/A	N/A
R-22 3m cable R-22/5 5m cable	S-22 3m cable S-22/5 5m cable	T-22 3m cable T-22/5 5m cable	U-22 3m cable U-22/5 5m cable	V-22 3m cable V-22/5 5m cable	W-22 3m cable W-22/5 5m cable	N/A	N/A
R-30 4m cable	S-30 4m cable	T-30 4m cable	U-30 4m cable	V-30 4m cable	W-30 4m cable	Y-30 4m cable	N/A





AUTOClabels

Ideal for tracking all :-

- Re-usable cables
- Larger instruments
- Electrosurgery devices
- Each label has its own unique consecutive number
- Ideal for quick identification

AUTOClabels - autoclave tracking system

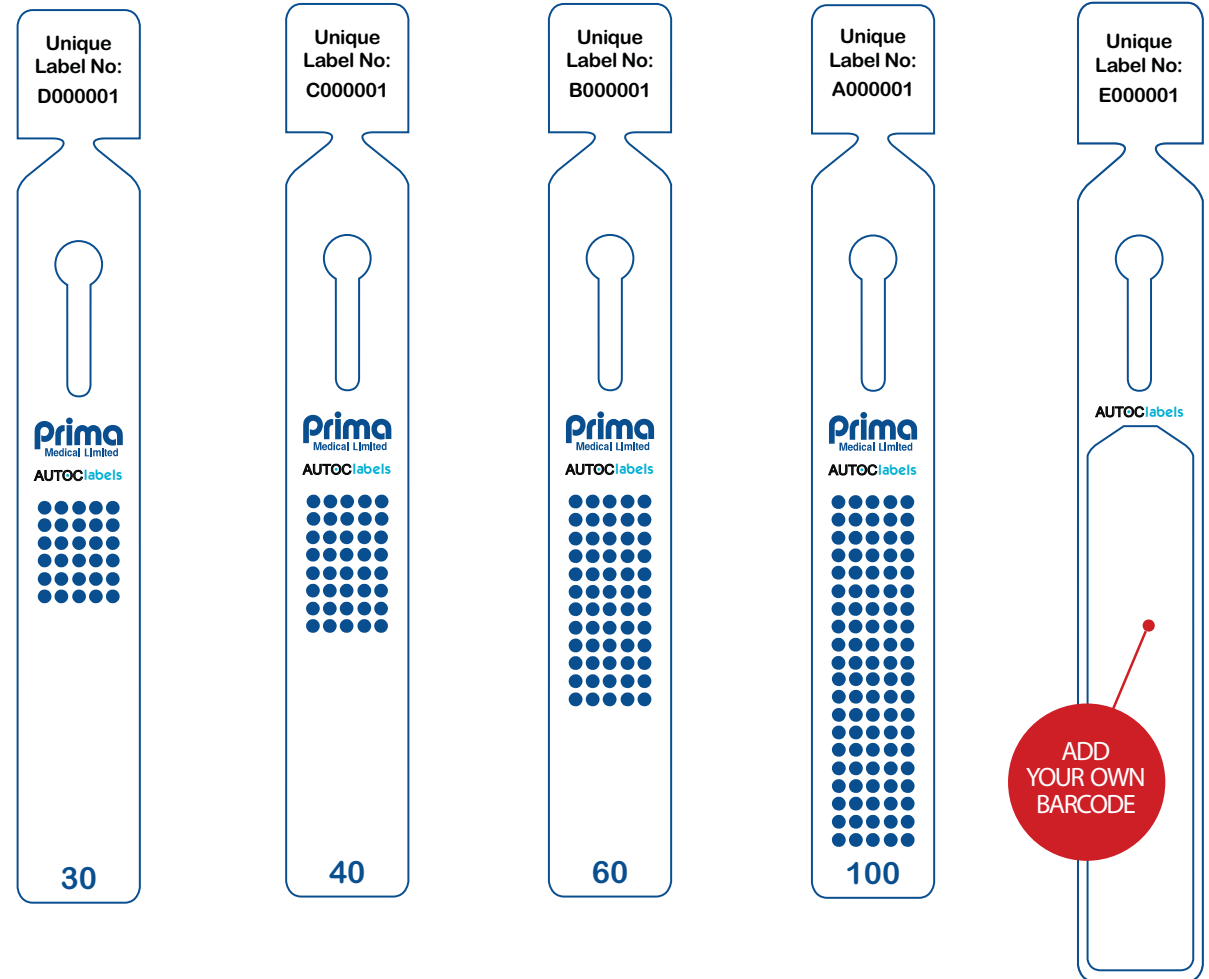
Simple!

It is easy to see and monitor product usage

- Pop a hole in the **AUTOClabel** every time the product is autoclaved with the permanently attached **AUTOClabel** punch or
- Track your product's autoclave history by using the unique label number printed at the top of each **AUTOClabel** tag or
- Use the blank **AUTOClabel** to apply your own barcode.

The **AUTOClabel** punch & label are easy to attach to the product, no tools needed, just clip on

No tie needed - Just push and lock the punch on the cable and the label just feeds back into itself – takes seconds!



<p>ACL30 Autoclave cycles 30</p> <p>Pack 100 Punch and label sets</p>	<p>ACL40 Autoclave cycles 40</p> <p>Pack 100 Punch and label sets</p>	<p>ACL60 Autoclave cycles 60</p> <p>Pack 100 Punch and label sets</p>	<p>ACL100 Autoclave cycles 100</p> <p>Pack 100 Punch and label sets</p>	<p>ACL000 Blank for barcode</p>
--	--	--	--	--

Dispersive cables



Unique !

- Autoclavable
- Easy clean cables

Generator connectors

Dispersive plate connector



Fits standard 25mm wide dispersive plate

	Valleylab (old generation)	Erbe ACC/ACC Erbe T Series Erbe VIO	Alsa/ Bard / Berchtold Bovie-Aaron 950, 1200 Eschmann TD400, TD800 Martin / Meditom	GU Eschmann 300 series	Valleylab SSE2 K, L and SSE3 Conmed	Aspen/ Bowa / Valleylab Erbe to 2.5 split-pad Conmed / Petas 500,600 Bovie-Aaron 1250,2250,3250
						
	DE1553 3m cable	DE1523 3m cable	DE1503 3m cable	DE1513 3m cable	DE1533 3m cable	DE1543 3m cable
	DE1555 5m cable	DE1525 5m cable	DE1505 5m cable	DE1515 5m cable	DE1535 5m cable	DE1545 5m cable